

APPLICATION PLATFORM  
INDUSTRIAL MONITORING






PowerEye

An industrial monitoring solution

<https://powereye.info>

Brochure

# Contents

-  Overview
-  Features
-  Benefits
-  System
-  Key Features





# Overview

**PowerEye** is a powerful software solution designed to seamlessly collect, visualize, and manage data from meters, sensors, and more. Whether you are monitoring energy consumption, environmental parameters, or any other measurement metrics, PowerEye has got you covered



Overview



Features



Benefits



System



Key  
Features





# Features



Overview



Features



Benefits



System



Key  
Features



## Configuration Capability

Easily customize connected devices, dashboard layout, alarms, and reports according to specific needs



## Diverse Compatibility

Easily integrates with all Modbus-supported devices



## Hierarchical Structure

Easily divide data monitoring into multiple hierarchical levels (e.g., Workshop 1, Workshop 2, Meter 1, Meter 2) according to actual needs



## Real-time Monitoring

Continuously monitor and record data from connected devices. Always updated when events occur



# Features



Overview



Features



Benefits



System



Key  
Features



## View historical data

Explore historical data through an intuitive dashboard. Easily identify trends and patterns



## Data Export

Easily export data to Excel for detailed analysis and reporting



## Alarms and Reports

Set up different types of alarms and access useful reports. Take a proactive approach in managing anomalies



## Mobile Monitoring

Access data from anywhere through our mobile app. Always updated, even when you're away from your desk



# Benefits

## Efficiency

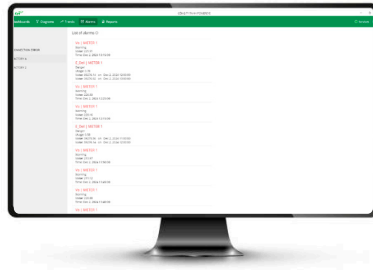
## Reliable

## Flexible

## Extension

### Real-time Information

**PowerEye** provides instant access to data, eliminating manual entry and delays. Whether you are monitoring energy consumption or environmental parameters, up-to-date information is always at your fingertips



### **Automatic Alarms!**

Set up custom alarms to receive notifications when thresholds are exceeded. No need for continuous monitoring, **PowerEye** will proactively alert you



Overview



Features



Benefits



System



Key  
Features





# Benefits

Efficiency

Reliable

Flexible

Extension

## Data Integrity



**PowerEye** ensures accurate data collection and storage. No more worries about data discrepancies due to human error

## Precise Timestamp



**PowerEye** Ensure synchronization between devices. Inconsistent timestamps can lead to incorrect analysis

## Secure Data Storage



Store data in an **encrypted database system** to ensure that even if someone gains unauthorized access, they will not be able to read the raw data

## Reliable Data



All stored data is electronically signed, ensuring that the data cannot be altered by anyone

## Security and Reliability



When transmitting data over the internet, **PowerEye** **encrypts** and signs the data



Overview



Features



Benefits



System



Key  
Features





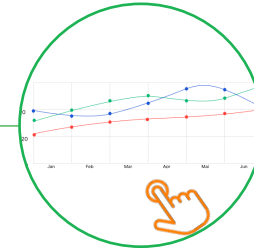
# Benefits

Efficiency

Reliable

Flexible

Extension



## Customization

Customize your **dashboard**, **layout**, and **trends** to display the most important metrics. Arrange widgets, charts, and graphs according to your needs



## Device Compatibility

Works well with various types of devices such as **electricity meters**, **temperature sensors**, and **flow meters**. Expanded compatibility with all **Modbus**-supported hardware



Overview



Features



Benefits



System



Key  
Features







# Benefits

Efficiency

Reliable

Flexible

Extension



Overview



Features



Benefits



System



Key  
Features



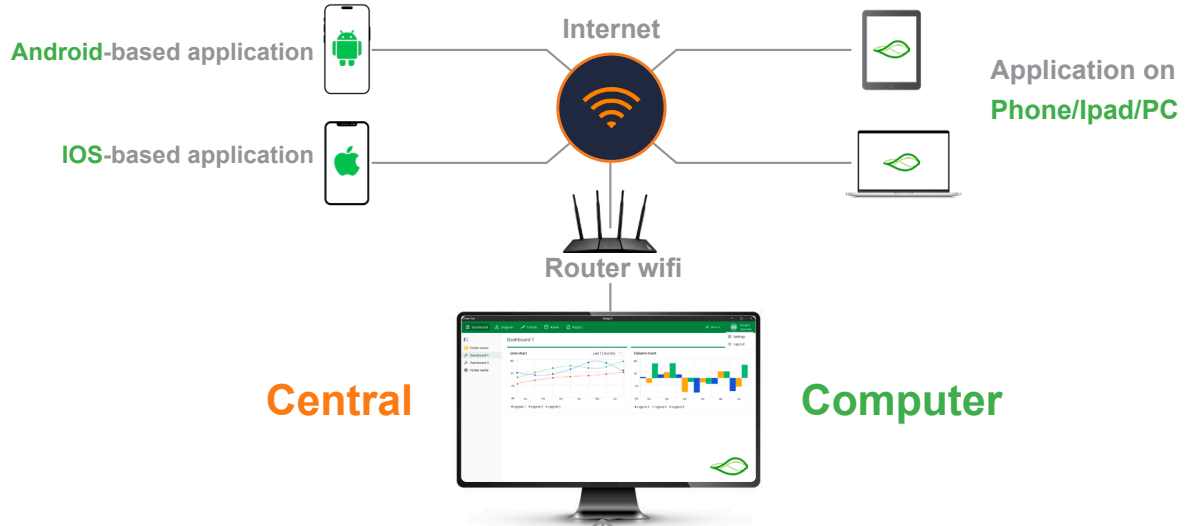
**PowerEye** Provides the scalability to connect more devices without affecting current settings

Easily add or remove monitoring, alarms, reports, and more as needs change, without requiring additional installation

● **Connection** 🖱️

● **Function** 🖱️

# System



Overview



Features



Benefits



System



Key Features



# System



Overview



Features



Benefits

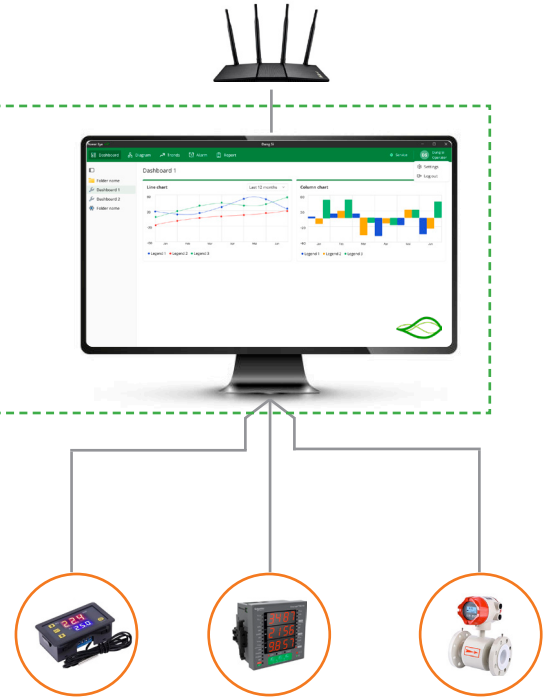


System

Key  
Features

## Central Computer

- **Connect** to all measuring devices
- **Collect, store, and share** data
- **Display** data in various formats.
- **Data alerts**





# System



Overview



Features



Benefits



System

Key  
Features

## Mobile App - iPad - PC Application

- Access data
- Display data in various formats
- Data alerts !!!



# Key features

## DASHBOARD

### Data Visualization

The dashboard displays data in various formats including text, line charts, and column charts. Each format provides a unique perspective on the data, helping you understand the data better.



### Comparative Analysis

The dashboard includes features like 'Today over Yesterday' and 'This week over last week', enabling you to compare data from different periods. This can assist you in spotting trends or anomalies in your data.

### Data Filtering

The dashboard offers several options to filter the data. You can choose to view data for specific time periods such as 'Latest', 'Today', 'Last 24 hours', etc. This allows you to focus on the data that is most relevant to you.

### Hierarchy

Power Eye's hierarchical dashboard structure allows you to organize and customize your monitoring experience, akin to managing folders in Window Explorer.



Overview



Features



Benefits



System



Key Features





# Key features

## TREND

### Real-Time Line Chart

The Trending feature displays a line chart that updates in real-time. This chart plots your data over time, allowing you to see how the data changes and identify any trends or patterns

### Customizable Trends

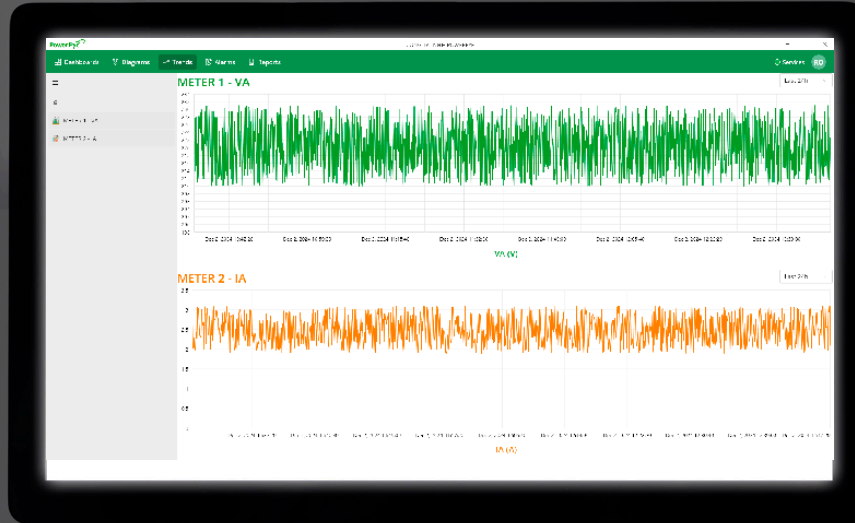
You can set up the Trending feature to show trends for any data you choose. Whether you're interested in tracking a single measurement or comparing multiple data points, the Trending feature can be customized to suit your needs

### Data Analysis

By observing the trends in your data, you can gain insights that might not be apparent from a single data point. This can help you identify issues early, predict future behavior, or simply understand your data better

### Hierarchy

Power Eye's hierarchical dashboard structure allows you to organize and customize your monitoring experience, akin to managing folders in Window Explorer



Overview



Features



Benefits



System



Key Features

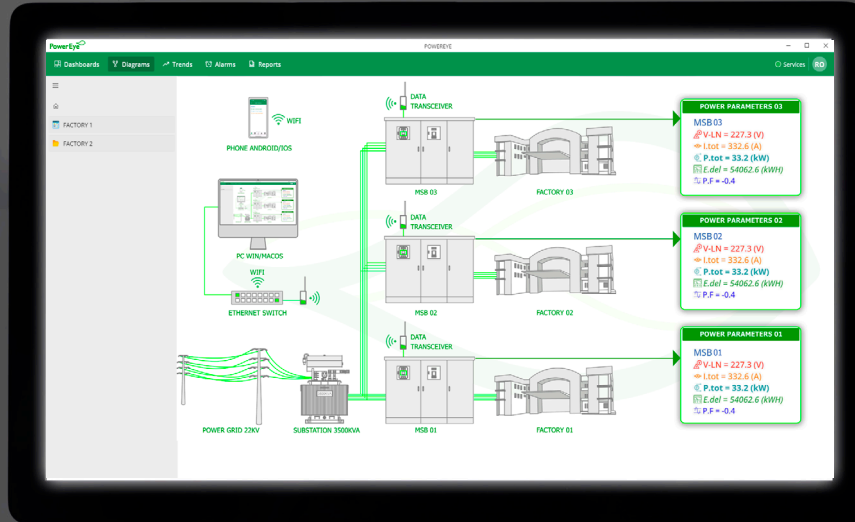


# Key features

## SƠ ĐỒ - DIAGRAM

### Visualize Device Layouts and Data

In **Power Eye**, diagrams serve as your virtual blueprints. Instead of physically visiting each device to read measurements, you can import a diagram that depicts the system layout. Then, within the software, you observe real-time data directly at each device location. It's like having your entire system at your fingertips.



### Hierarchy

**Power Eye's** hierarchical dashboard structure allows you to organize and customize your monitoring experience, akin to managing folders in Windows Explorer



Overview



Features



Benefits



System



Key Features





# Key features

## ALARM

### Device Connection Monitoring

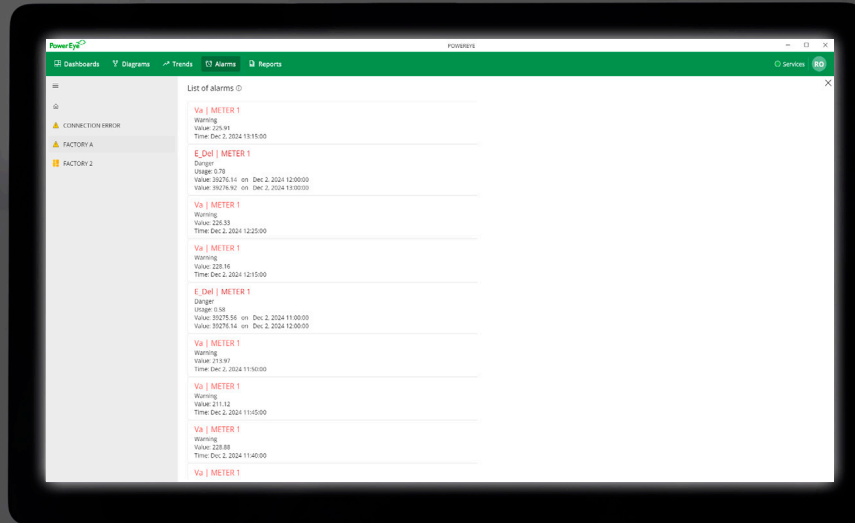
Detects connection errors, ensuring that your sensors, meters, and devices stay online. No more blind spots

### Range Limit Alarms

each metric like voltage, pressure, or temperature has its own safety zone. When your data approaches these limits, Power Eye alerts you. Think of it as a friendly warning sign

### Usage Alarm (Data Consumption)

Feature diligently monitors data consumption. Specifically, for metrics like energy, these alarms serve as consumption thresholds. As soon as data consumption reaches or exceeds these limits, Power Eye promptly notifies you.



Overview



Features



Benefits



System



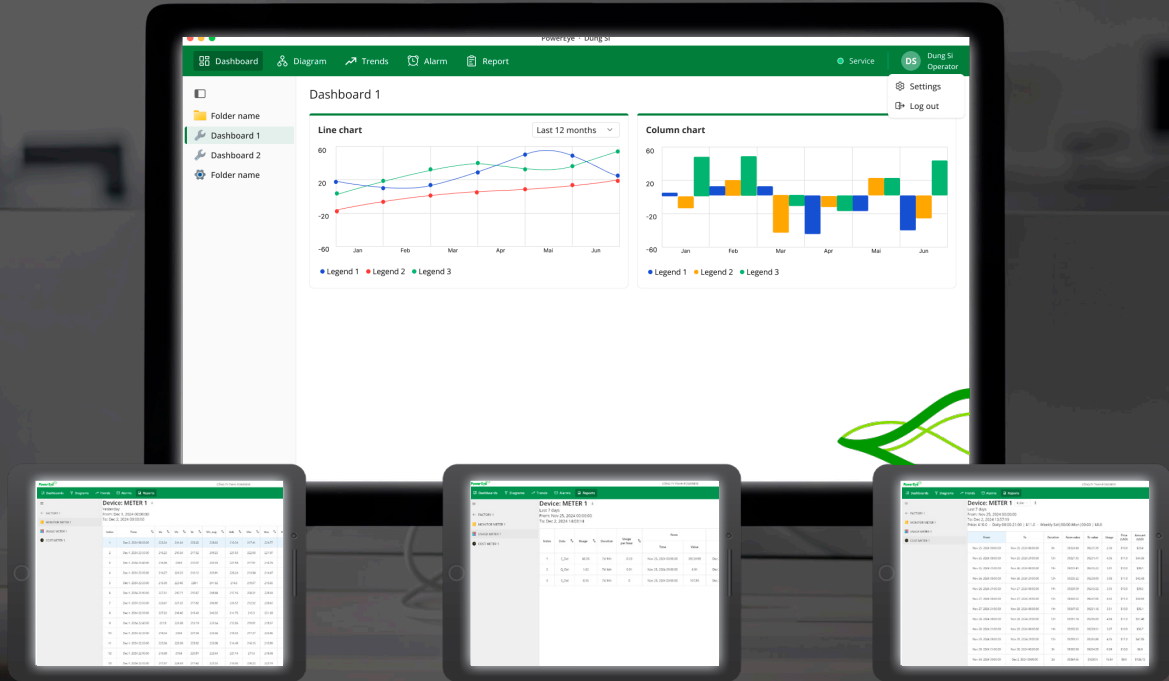
Key Features





## Key features

## REPORT



# Data Monitoring Report

# Data Usage Report

# Data Cost Report

# Key features



Overview



Features



Benefits



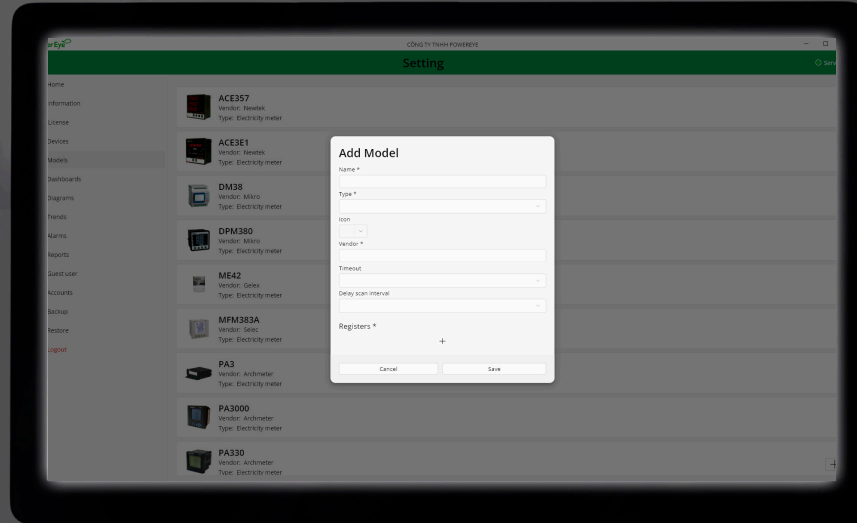
System

Key  
Features

## DEVICE MANAGEMENT

### Configurable

PowerEye supports all devices with RS485 communication ports according to the Modbus standard. This ensures flexibility and compatibility with various types of devices. If your device is not supported by default, you can easily add it to the PowerEye system. This allows you to optimize the use of existing devices and ensures the system operates as efficiently as possible



### Extension

PowerEye allows for expanded connectivity by purchasing additional device licenses. This helps you easily upgrade the system and connect more devices, meeting the growing usage demands

# Key features



Overview



Features



Benefits



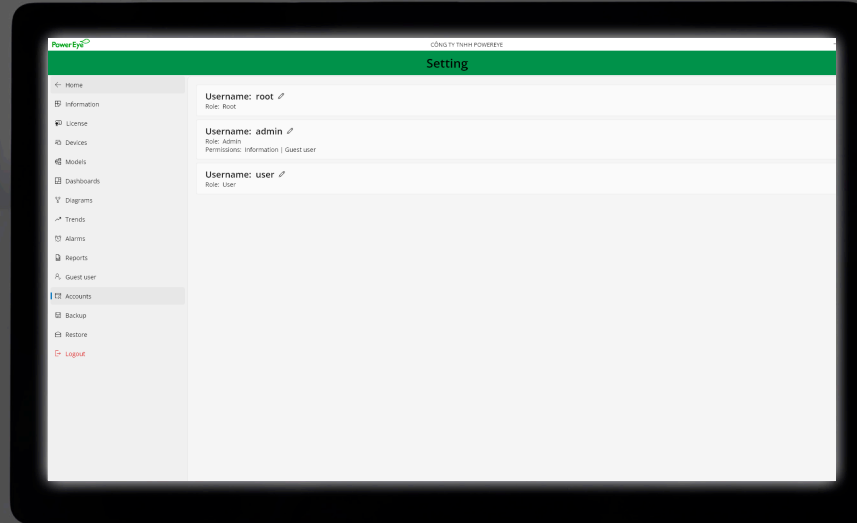
System

Key  
Features

## ACCOUNT MANAGEMENT

### Allow multiple account creation

PowerEye allows the creation of multiple user accounts with different roles, such as Root and Admin. This ensures flexibility and security in managing and utilizing the system



### Root

Full access to the application

### Admin

Use the application with assigned permissions, and users can only access the application in view-only mode



# Key features

## MOBILE-TABLET APPLICATION CONNECTION MANAGEMENT



Overview



Features



Benefits



System



Key  
Features



### Create user account

You can set up a new account for users to access the mobile application on PowerEye. This process is simple and quick, allowing users to easily log in and start using the application

### Manage user permissions

It allows you to set permissions for each user account, ensuring they only have access to the functions and data they need. This helps secure information and improves management efficiency

### Remote monitoring

The application allows users to remotely monitor activities conveniently, keeping them updated with information anytime, anywhere

### Remote surveillance

Instant notifications: Users will receive real-time notifications about important events, ensuring they are always informed about the activity status



# THANK YOU!

<https://powereye.info>

Power Eye 

An industrial monitoring solution